

# CHAMOT

## Recombinant Human BMP-15

CM077-5HP  
CM077-20HP  
CM077-100HP  
CM077-500HP  
CM077-1000HP



CHAMOT

喬默生物技術(上海)有限公司  
CHAMOT BIOTECHNOLOGY CO., LTD.

# CONTENT

1 产品简介

2 产品组成

3 产品储存

4 产品使用

## Recombinant Human BMP-15 (Bone morphogenetic protein-15)

编号:	CM077-5HP	规格:	5 $\mu$ g
	CM077-20HP		20 $\mu$ g
	CM077-100HP		100 $\mu$ g
	CM077-500HP		500 $\mu$ g
	CM077-1000HP		1 mg

类别: 重组蛋白      应用: Functional Assay

### 产品简介

**描述:** Bone morphogenetic protein 15 is a protein, that in humans, is encoded by the BMP15 gene. It's mainly involved in folliculogenesis. The protein encoded by this gene is a member of the TGF-superfamily. It is a paracrine signaling molecule involved in oocyte and follicular development. Using Northern blot analysis, BMP15 has been shown to be exclusively expressed in the ovaries. This protein may be involved in oocyte maturation and follicular development as a homodimer or by forming heterodimers with a related protein, Gdf9.

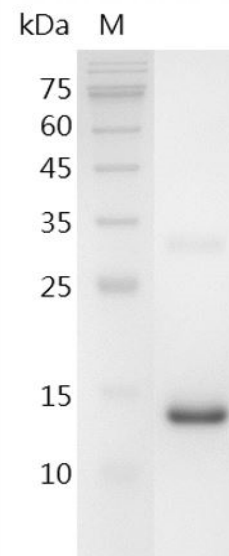
**来源:** *Escherichia coli*

**纯度:** >98% as determined by SDS-PAGE.

**生物学活性:** Measure by its ability to induce alkaline phosphatase production by ATDC5 cells. The ED<sub>50</sub> for this effect is < 17 ng/mL.

**内毒素检测:** < 0.1 EU per 1  $\mu$ g of the protein by the LAL method.

**蛋白序列:**  
MQADGISA EVTASSSKHSGPEN  
NQCSLHPFQISFRQLGWDHWIIA  
PPFYTPNYCKGTCLRVLRDGLNS  
PNHAIQNQLINQLVDQSVPRPSC



SDS-PAGE analysis of recombinant human BMP-15

VPYKYVPISVLMIEANGSILYKEYE  
GMIAESCTCR with polyhistidine  
tag at the C-terminus

## 产品组成

成分： 从含有 20 mM sodium citrate, 0.2 M NaCl, pH 4.5溶液中冻干的蛋白质.

## 产品储存/运输

产品形式	储存温度	储存时间
冻干粉	-20°C至-80°C	自收到之日起1年
重悬液 (初始)	2°C至8°C	不超过1周
重悬液 (经稀释)	-20°C至-80°C	3到6个月

运输方式： 蓝冰

## 产品使用

- 1、开盖前，建议3000-3500rpm离心5min。
- 2、推荐使用无菌水重悬冻干粉，溶液浓度不低于100µg/mL，不高于1mg/mL，并室温静置至少20min以充分溶解。勿涡旋剧烈振荡。
- 3、重悬后的溶液，2 -8°C无菌保存不超过1周。
- 4、如需长期保存，推荐使用无菌的含载体蛋白（如0.1% BSA、10% FBS 或5% HSA）的溶液进一步稀释（不低于10ug/mL）后分装保存，-20°C至 -80°C无菌保存3到6个月。无血清实验需求时，可更换为 5%海藻糖溶液作为载体。避免反复冻融。

WB= Western Blot; IP= Immunoprecipitation; IF= Immunofluorescence; IHC= Immunohistochemistry;  
FACS= Fluorescence activated Cell Sorting; FA= Functional Assay